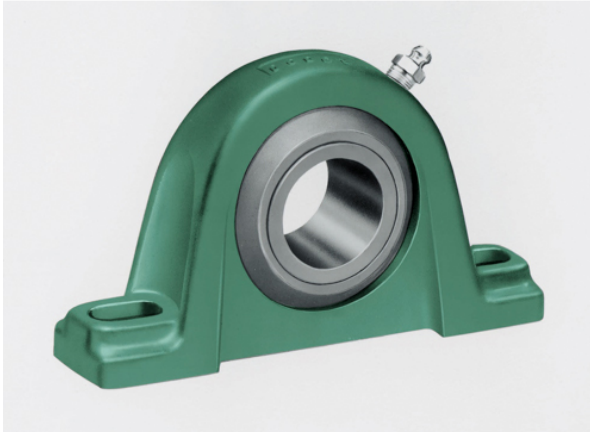




# ECU BEARING LTD

## 2 in x 6 to 6-11/16 in x 1-5/8 in Dodge P2BLTB10200 Pillow Block Plain Sleeve Bearing Units



Bearing No. P2BLTB10200

P2BLTB10200 Bearing 2D drawings and 3D CAD models

d	2 in
finish/coating:	Uncoated
overall length:	8-1/8 in
B	1-5/8 in
overall height:	4-15/32 in
operating temperature range:	+250 to +1000 ° F, -200 to -40 ° F
mounting:	Two-Bolt Base
base width:	2-1/4 in
housing construction:	Solid Pillow Block
D	6 to 6-11/16 in
base to bore centerline:	2-3/16 in
lubrication type:	Self Lubricating
duty type:	Standard Duty
series:	210
housing material:	Cast Iron
standards met:	UL, AFBMA, AGMA, ASMMA, BSA, CMA, MPTA, PTDA
expansion type:	Non-Expansion Bearing (Fixed)
manufacturer catalog number:	032986