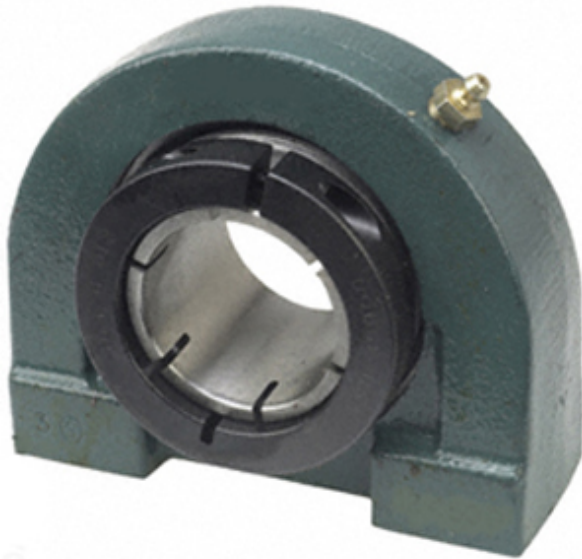




ECU BEARING LTD



1.25 Inch | 31.75 Millimeter x 1.563 Inch | 39.69 Millimeter x 1.688 Inch | 42.875 Millimeter Dodge TB-DL-104S Pillow Block Ball Bearing Units

Bearing No. TB-DL-104S

TB-DL-104S Bearing 2D drawings and 3D CAD models

Category	Pillow Block Bearings
Inventory	0.0
Manufacturer Name	ABB MOTORS AND MECHANICAL INC
Minimum Buy Quantity	N/A
Weight	1.298
EAN	0782475892457
Product Group	M06110
Number of Mounting Holes	2
Mounting Method	Concentric Collar
Housing Style	2 Bolt Tap Base Pillow Block
Rolling Element	Ball Bearing
Housing Material	Cast Iron
Expansion / Non-expansion	Non-expansion
Mounting Bolts	7/16 Inch
Relubricatable	Yes
Insert Part Number	INS-DL-104S
Seals	Single Lip Contact
Housing Configuration	1 Piece Solid
Inch - Metric	Inch
Other Features	Single Row Normal Duty Wide Inner Race
Long Description	2 Bolt Tap Base Pillow Block; 1-1/4" Bore; 1-11/16" Base to Center Height; Concentric Collar Mount;



ECU BEARING LTD

	Ball Bearing; Relubricatable; Cast Iron; Single Lip Contact; Non-expansion
Category	Pillow Block
UNSPSC	31171511
Harmonized Tariff Code	8483.20.40.40
Noun	Bearing
Keyword String	Pillow Block
Manufacturer URL	http://www.dodge-pt.com
Manufacturer Item Number	TB-DL-104S
Manufacturer Internal Number	128747
Weight / LBS	3.5
Actual Bolt Center to Center	3 Inch 76Millimeter
Nominal Bolt Center to Center	3 Inch 76 Millimeter
Bolt Spacing Minimum	0 Inch 0Millimeter
Bolt Spacing Maximum	0 Inch 0Millimeter
D	1.563 Inch 39.69 Millimeter
B	1.688 Inch 42.875 Millimeter
d	1.25 Inch 31.75 Millimeter